

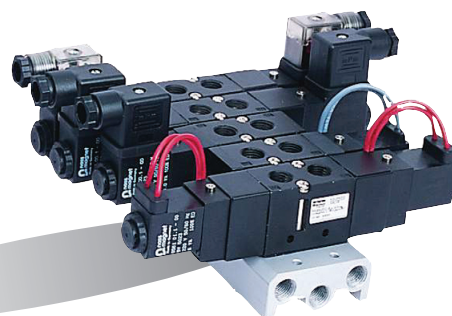


5 Port pilot operated Solenoid Valve

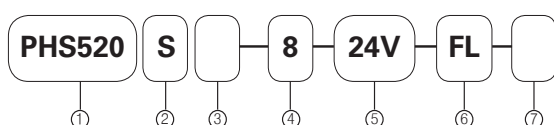
PHS520 Series

Rubber Seal / In-Line Type

2 Position Single solenoid	PHS520S	
2 Position Double solenoid	PHS520D	
3 Position Center Closed	PHS520C	
3 Position Exhaust Center	PHS520E	
3 Position Pressure Center	PHS520P	



ORDER KEY



1. Series

5 Port Solenoid Valve

2. Function

S	Single Solenoid
D	Double Solenoid
C	Center Closed
E	Exhaust Center
P	Pressure Center

3. Pilot

No mark	Internal Pilot
X	External Pilot

4. Port Size

8	PT 1/8"
---	---------

5. Voltage

24V	DC24V
110V	AC110V
220V	AC220V

6. Wiring

No mark	Lead Wire
FL	Lead Wire w/Lamp Indicator
D	DIN Connector
DL	DIN Connector w/Lamp Indicator

7. Manual Override

No mark	Non-Lock
L	Lever-Lock

Specifications

Model No	Unit	PHS520S	PHS520D	PHS520C	PHS520E	PHS520P
Fluid		Non-lubricated / Lubricated Air				
Port Size		PT 1/4"				
Effective Area	mm ² (Cv)	18 (1.0)			14 (0.8)	
Temperature Range	°C	5 ~ 60°C				
Pressure	MPa(bar)	0.15 ~ 0.9 (1.5 ~ 9.0)	0.1 ~ 0.9 (1.0 ~ 9.0)	0.2 ~ 0.9 (2.0 ~ 9.0)		
Max. Operating Cycle	cycle/s	10			3	
Response Time	ms	20 or less			35 or less	
Exhaust Type		Individual Exhaust				
Manual Override		Non-lock (Standard), Lever-lock (Option)				
Shock/Vibration Resistance	m/s ²	30G ~ 5G (8.3 ~ 200Hz)				

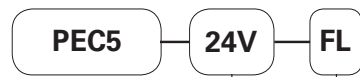
Electrical Specifications

Parameter	Unit	Value
Voltage	V	DC24V, AC110V, AC220V (50 ~ 60Hz)
Allowable Voltage Fluctuation	%	±10%
Power Consumption	W, VA	DC24V (3W), AC110/220V (50Hz: 5.0VA, 60Hz: 4.2VA)
Insulation Class		F
Wiring		Lead Wire, DIN Connector
Indicator Light		LED



Coil & Connector

Coil



Voltage	
24V	DC24V
110V	AC110V
220V	AC220V

Wiring	
No mark	Lead Wire
FL	Lead Wire w/Lamp Indicator
D	DIN

Explosion Proof Coil

PEC5-22-EX-24V

Voltage	
24V	DC24V
110V	AC110V
220V	AC220V

Note) Explosion Proof Coil can be applied to the PHS Series and the grade is EX m II T4

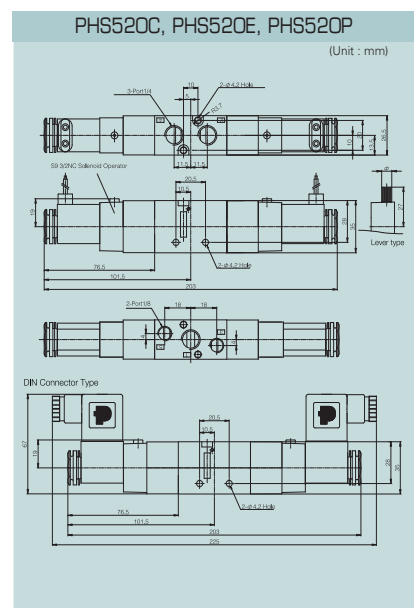
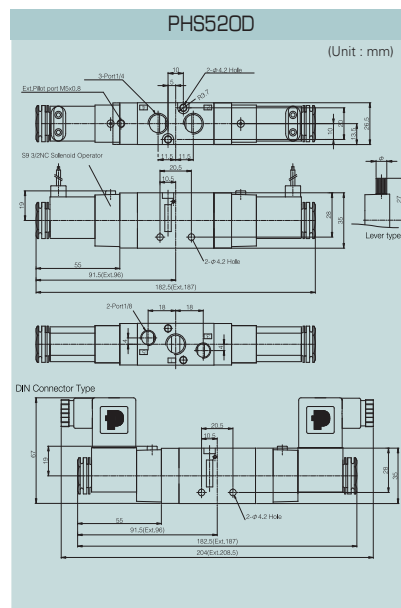
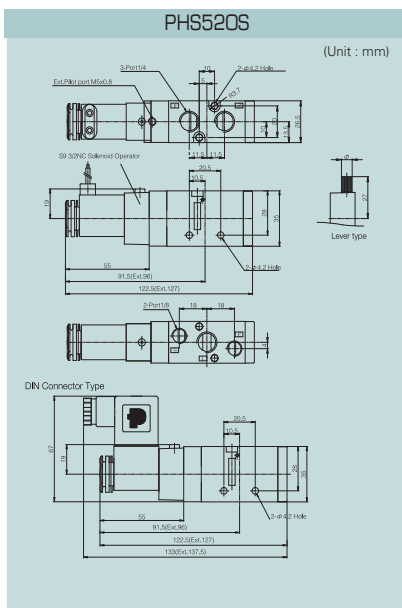
Connector



Lamp Indicator	
No mark	Non-lamp Indicator
L	Lamp Indicator

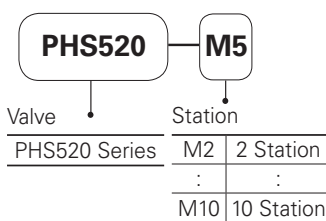
Voltage	
24V	DC24V
110V	AC110V
220V	AC220V

Dimensions



Manifold

ORDER KEY

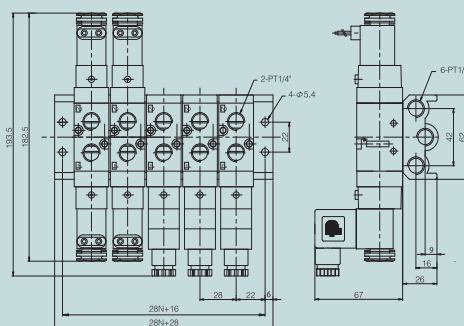


Specifications

Port	Port 1	Common Supply: Rc1/4
Size	Port 3, 5	Common Exhaust: Rc 1/4
Station	2 ~ 10 Station	
Mounting	Direct mount	
Valve	PHS 520	
Blanking Plate	PHS520 - BP	

Dimensions

PHS520S, D



PHS520C, E, P

