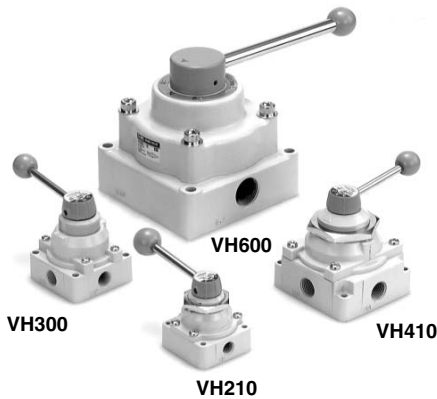




# Hand Valve Series VH

IndustryKART.com Online Industrial Megastore



## Specifications

Fluid	Air	
Proof pressure	1.5 MPa	
Max. operating pressure	VH200/300/400	1.0 MPa
	VH600	0.7 MPa
Ambient temperature and operating fluid temperature	-5 to 60°C (No freezing)	
Operating angle	90°	
Lubrication	Not required (Use turbine oil Class 1 ISO VG32, if lubricated.)	

## Option

Bottom ported	VH300/400
Panel mounted	VH200/300/400
Different P port location (On handle side)	All models applicable *□



\* Note that 1 (P) port of VH600 is located on handle side as standard. □

□A

V□A

S□A

V□A

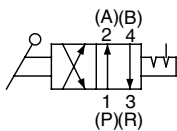
VM

VR

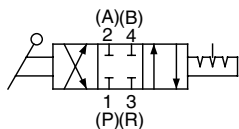
VH

VHS

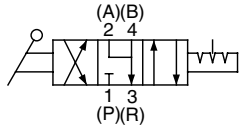
### JIS Symbol 2 position



### Closed center

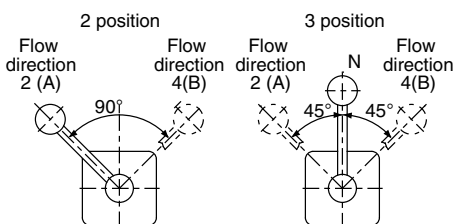


### Exhaust center



### Handle Operation Angle and Air Flow Direction

(Refer to the figures of piping direction to the right.)



## Model

Series	Port size Rc	Number of positions	Piping direction	Model		Effective area (mm <sup>2</sup> )	Weight (kg)
				Body mounted	Panel mounted		
VH2	1/4	3 (Closed center)		VH200-02	VH210-02	7.5	0.42
		3 (Exhaust center)		VH201-02	VH211-02		
		2 (Position)		VH202-02	VH212-02		
VH3	1/4, 3/8	3 (Closed center)		VH300-02/03	VH310-02/03	Rc 1/4: 17	0.71
		3 (Exhaust center)		VH301-02/03	VH311-02/03		
		2 (Position)		VH302-02/03	VH312-02/03		
		3 (Closed center)		VH320-02/03	VH330-02/03	Rc 3/8: 20	
		3 (Exhaust center)		VH321-02/03	VH331-02/03		
		2 (Position)		VH322-02/03	VH332-02/03		
VH4	1/4 to 3/4	3 (Closed center)		VH400-02 to 06	VH410-02 to 06	Rc 1/4: 45	1.28
		3 (Exhaust center)		VH401-02 to 06	VH411-02 to 06		
		2 (Position)		VH402-02 to 06	VH412-02 to 06		
		3 (Closed center)		VH420-02 to 06	VH430-02 to 06	Rc 3/8: 49	
		3 (Exhaust center)		VH421-02 to 06	VH431-02 to 06		
		2 (Position)		VH422-02 to 06	VH432-02 to 06		
VH6	3/4, 1	3 (Exhaust center)		VH600-06/10	—	Rc 3/4: 185 Rc 1: 194	9.7

## How to Order

**VH 2 0 1 — 02 —**

**Hand valve**

**Body size (Base size)**

2	1/4 base
3	3/8 base
4	1/2 base
6	1 base

**Piping/Mounting**

Symbol	Piping <sup>(Note)</sup>	Mounting method
0	Side	Body
1	Side	Panel mounting
2	Bottom	Body
3	Bottom	Panel mounting

Note) Only side piping is available for VH200 and VH600 and R port is located on the bottom.

**Function**

0	3 position closed center
1	3 position exhaust center
2	2 position

**1(P) port location**

R	1(P) port 180° location change
L	Long handle (Applicable to VH300/400)

\* When specifying more than one option, indicate symbols alphabetically.

**Port size (Nominal size)**

02	1/4
03	3/8
04	1/2
06	3/4
10	1

**Thread type**

Nil	Rc
N	NPT
F	G

## Flow Characteristics

