

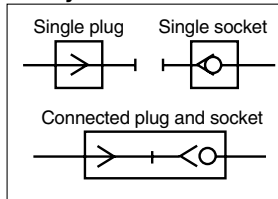
# S Couplers Series **KK**



Series KK2

Series KK3/4/6

### JIS Symbol



### Specifications

<b>Fluid</b>	Air, Water
<b>Operating pressure range</b> <small>Note)</small>	KK2: -100 kPa to 1 MPa KK3: -90 kPa to 1 MPa KK4/6: 0 to 1 MPa
<b>Proof pressure</b>	1.5 MPa
<b>Ambient and fluid temperature</b>	Air: -5 to 60°C Water: 5 to 40°C (No freezing)
<b>Plating, Sealant</b>	Electroless nickel plated (copper-free and fluorine-free application), With male thread sealant

Note) Do not use the S couplers with a leak tester or for vacuum retention because they are not guaranteed for zero leakage.

### Performance

<b>Plug and socket connection</b>	One-touch connection and release
<b>Check valve</b>	Socket: Built-in check valve (standard)
<b>Sleeve lock mechanism</b> <small>Note)</small>	Manual locking type (standard)

Note) Series KK2 is not provided with lock mechanism.

### Effective Area

Body size	Plug	Socket	Effective area mm <sup>2</sup>
M5	KK2P-M5M	KK2S-M5M	3.8
1/8	KK3P-01MS	KK3S-01MS	20
1/4	KK4P-02MS	KK4S-02MS	39
1/2	KK6P-04MS	KK6S-04MS	82

### How to Order

**KK 4 S - 02 M S**

- Body size**

2	M5
3	1/8
4	1/4
6	1/2
- Socket/Plug designation**

S	Socket
P	Plug
- With sealant (male thread)**
- Connection type**

Symbol	Type
M	Male thread
F	Female thread
N	With nut fitting
H	Straight with One-touch fitting
L	Elbow with One-touch fitting
E	Bulkhead with One-touch fitting
- Piping port size variation**

#### Male/Female thread type

Symbol	Thread size
M5	M5 x 0.8
01	R, Rc 1/8
02	R, Rc 1/4
03	R, Rc 3/8
04	R, Rc 1/2
06	R, Rc 3/4

#### One-touch fitting type

Symbol	Applicable tubing O.D. mm
23	ø3.2
04	ø4
06	ø6
08	ø8
10	ø10
12	ø12
16	ø16

#### Nut fitting type

Symbol	Applicable hose I.D./O.D. mm
50	5/8
60	6/9
65	6.5/10
80	8/12
85	8.5/12.5
110	11/16

# Series KK

## Dimensions/Socket (S)

### Male thread type

(mm)

KK2

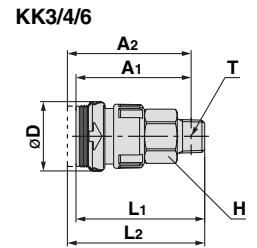
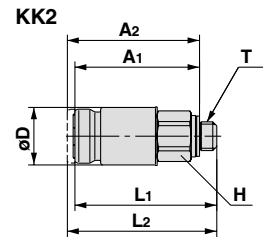


KK3/4/6



Body size	Model	T Connection port size	H Width across flats	øD	L1	L2 When connected	A1*	A2* When connected	Min. bore size	Effective area mm <sup>2</sup>	Mass g
M5	KK2S-M5M	M5 x 0.8	8	10.0	24.7	26.2	21.7	23.7	2.5	3.8	6.1
	-01MS	R 1/8	10		24.4	25.9		22.8			
1/8	KK3S-01MS	R 1/8	14	20.2	36.6	39.1	33.5	36.0	6.0	20.4	20.1
	-02MS	R 1/4			37.0	39.5	31.5	34.0			
	-03MS	R 3/8	17		37.6	40.1	32.2	34.5	9.0	21.1	29.0
1/4	KK4S-01MS	R 1/8	19	28.0	49.5	53.2	46.4	50.1	6.0	22.9	47.5
	-02MS	R 1/4			50.5	54.2	45.0	48.7			
	-03MS	R 3/8	17		48.9	52.6	43.5	47.2	11.0	40.4	50.9
	-04MS	R 1/2	22		48.8	52.5	41.7	45.4	13.0	42.7	61.2
1/2	KK6S-03MS	R 3/8	24	31.6	59.1	64.4	53.7	59.0	11.0	71.7	87.9
	-04MS	R 1/2			59.3	64.6	52.2	57.5			
	-06MS	R 3/4	27		60.2	65.5	50.7	56.0	15.0	83.8	113.3

\* Reference dimension for R threads after installation.



### Female thread type

(mm)

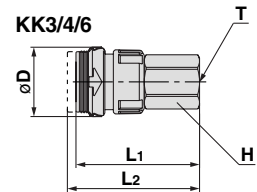
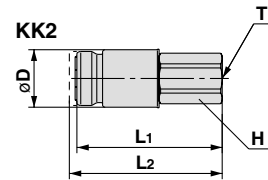
KK2



KK3/4/6



Body size	Model	T Connection port size	H Width across flats	øD	L1	L2 When connected	Min. bore size	Effective area mm <sup>2</sup>	Mass g
M5	KK2S-M5F	M5 x 0.8	8	10.0	25.3	26.8	4.2	5.4	6.4
1/8	KK3S-01F	Rc 1/8	14	20.2	36.0	38.5	8.2	20.6	23.6
	-02F	Rc 1/4	17		40.1	42.6		21.1	34.4
1/4	KK4S-02F	Rc 1/4	19	28.0	41.9	44.4	10.9	39.6	56.9
	-03F	Rc 3/8			50.4	54.1			
	KK6S-03F	Rc 3/8	24		58.6	63.9	18.0	83.1	93.6
1/2	-04F	Rc 1/2	24	31.6	61.0	66.3	18.0	83.8	87.4



### Nut fitting type (for fiber reinforced urethane hose)

(mm)



Body size	Model	Applicable hose I.D./O.D.	H1 Width across flats	H2 Width across flats	øD	L1	L2 When connected	M	Min. bore size	Effective area mm <sup>2</sup>	Mass g
1/8	KK3S-50N	5/8	14	14	20.2	42.6	45.1	13.7	4.5	12.2	32.1
	-60N	6/9	17	17		44.4	46.9	16.5	5.4	18.3	48.7
	-65N	6.5/10				5.9	19.2	46.4			
1/4	KK4S-50N	5/8	19	17	28.0	54.1	57.8	13.7	4.5	12.2	55.8
	-60N	6/9				56.8	60.5	16.5	5.4	20.4	69.3
	-65N	6.5/10				5.9	24.1	66.8			
	-80N	8/12				7.4	35.1	68.5			
	-85N	8.5/12.5				7.8	36.6	71.1			
1/2	KK6S-80N	8/12	24	24	31.6	66.0	71.3	17.4	7.4	36.6	107.5
	-85N	8.5/12.5				7.4	41.2	110.2			
	-110N	11/16				7.8	68.4	119.8			

