

**Parker One Pneumatic**

# Air Preparation

## P31 Mini Series

40mm body width

1/4" Ported

Flows up to:  $\text{dm}^3/\text{s}$  (SCFM)

Filter	12	(25)
Coalescer	2	(4.2)
Regulator	30	(64)
Filter/Regulator	14	(30)
Lubricator	13	(28)

Features:

- Space saving integral gauge
- Manifold style regulators available
- OSHA compliant shut-off valves
- Soft-Start & Quick Dump valves
- Electronic Proportional Regulator



## P32 Compact Series

60mm body width

1/4", 3/8", & 1/2" Ported

Flows up to:  $\text{dm}^3/\text{s}$  (SCFM)

Filter	38	(80)
Coalescer	11	(23)
Regulator	67	(142)
Filter/Regulator	64	(136)
Lubricator	47	(100)

Features:

- Manifold style regulators available
- OSHA Compliant shut-off valves
- Soft-Start & Quick Dump valves
- Electronic Proportional Regulator



## P33 Standard Series

73mm body width

1/2" & 3/4" Ported

Flows up to:  $\text{dm}^3/\text{s}$  (SCFM)

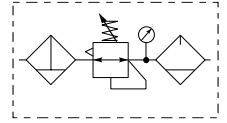
Filter	48	(102)
Coalescer	20	(42)
Regulator	100	(212)
Filter/Regulator	98	(208)
Lubricator	68	(144)

Features:

- OSHA Compliant shut-off valves
- Soft-Start & Quick Dump valves  
(Utilizes P32 size only)
- Electronic proportional regulator  
(Utilizes P32 size only)

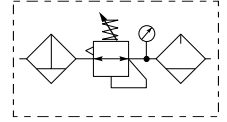


Popular Combinations



**Filter + Regulator + Lubricator Combinations + Poly bowl**  
**5 micron element, 8 bar (116 psig) Regulator + Gauge and Wall Mounting Brackets**  
**Inlet pressure 10 bar (145 psig), Secondary pressure 6.3 bar (91.3 psig),**  
**1 bar (14.5 psig) pressure drop.**

Port size	Flow dm <sup>3</sup> /s (scfm)	Manual Drain	Weight	Auto Drain	Weight
1/4"	20 42	<b>P32CB22GEMNGLNW</b>	1.29 kg (2.84 lbs)	<b>P32CB22GEANGLNW</b>	1.29 kg (2.84 lbs)
3/8"	32 68	<b>P32CB23GEMNGLNW</b>	1.29 kg (2.84 lbs)	<b>P32CB23GEANGLNW</b>	1.29 kg (2.84 lbs)
1/2"	40 85	<b>P32CB24GEMNGLNW</b>	1.29 kg (2.84 lbs)	<b>P32CB24GEANGLNW</b>	1.29 kg (2.84 lbs)



**Filter/Regulator + Lubricator Combinations + Poly bowl**  
**5 micron element, 8 bar (116 psig) Regulator + Gauge and Wall Mounting Brackets**  
**Inlet pressure 10 bar (145 psig), Secondary pressure 6.3 bar (91.3 psig),**  
**1 bar (14.5 psig) pressure drop.**

Port size	Flow dm <sup>3</sup> /s (scfm)	Manual Drain	Weight	Auto Drain	Weight
1/4"	22 45	<b>P32CA22GEMNGLNW</b>	1.03 kg (2.27 lbs)	<b>P32CA22GEANGLNW</b>	1.03 kg (2.27 lbs)
3/8"	33 70	<b>P32CA23GEMNGLNW</b>	1.03 kg (2.27 lbs)	<b>P32CA23GEANGLNW</b>	1.03 kg (2.27 lbs)
1/2"	43 90	<b>P32CA24GEMNGLNW</b>	1.03 kg (2.27 lbs)	<b>P32CA24GEANGLNW</b>	1.03 kg (2.27 lbs)

**Filter / Regulator coding**  
(use with codes: A M T)

**Filter coding**  
(use with combo codes: B C D F G). For multiple filters, repeat as needed

**Regulator coding**  
(use with combo codes: B D E W)

**Lubricator coding**  
(use with combo codes: A B C E)

**Assembly configuration**

<p><b>P 3 2</b></p> <table border="1"> <tr> <th colspan="2">Combination</th> <th rowspan="2">Thread type</th> </tr> <tr> <td>B/V + Combination</td> <td><b>Q</b></td> </tr> <tr> <td>Combination + B/V</td> <td><b>X</b></td> </tr> <tr> <td>Combination</td> <td><b>C</b></td> </tr> <tr> <td>Shut off + Combination</td> <td><b>Y</b></td> </tr> <tr> <td>Combination + Shut off</td> <td><b>Z</b></td> </tr> </table> <table border="1"> <tr> <th colspan="2">Combination type*</th> <th rowspan="2">Port size</th> </tr> <tr> <td>F/R+L</td> <td><b>A</b></td> </tr> <tr> <td>F+R+L</td> <td><b>B</b></td> </tr> <tr> <td>F+Fc</td> <td><b>F</b></td> </tr> <tr> <td>F+Fc+Fa</td> <td><b>G</b></td> </tr> <tr> <td>F/R+Fc</td> <td><b>M</b></td> </tr> <tr> <td>F+Fc1+Fc</td> <td><b>Q</b></td> </tr> <tr> <td>F/R+Fc+Fa</td> <td><b>T</b></td> </tr> <tr> <td>F+Fc+Fa</td> <td><b>G</b></td> </tr> </table> <p>* Combination type                  F = 5µ                  Fc1 = 1µ                  Fc = .01µ                  Fa = Adsorber</p> <table border="1"> <tr> <th colspan="2">Bowl type</th> </tr> <tr> <td>Poly bowl with bowl guard</td> <td><b>G</b></td> </tr> <tr> <td>Metal bowl without sight gauge</td> <td><b>M</b></td> </tr> <tr> <td>Metal bowl with sight gauge</td> <td><b>S</b></td> </tr> </table> <p><b>Note:</b> All bowl types are the same for each component  <b>Example:</b> If a "G" is specified for a F+L, both units would get a poly bowl with bowl guard.</p>	Combination		Thread type	B/V + Combination	<b>Q</b>	Combination + B/V	<b>X</b>	Combination	<b>C</b>	Shut off + Combination	<b>Y</b>	Combination + Shut off	<b>Z</b>	Combination type*		Port size	F/R+L	<b>A</b>	F+R+L	<b>B</b>	F+Fc	<b>F</b>	F+Fc+Fa	<b>G</b>	F/R+Fc	<b>M</b>	F+Fc1+Fc	<b>Q</b>	F/R+Fc+Fa	<b>T</b>	F+Fc+Fa	<b>G</b>	Bowl type		Poly bowl with bowl guard	<b>G</b>	Metal bowl without sight gauge	<b>M</b>	Metal bowl with sight gauge	<b>S</b>	<table border="1"> <tr> <th colspan="2">Element</th> </tr> <tr> <td>5µ Element</td> <td><b>E</b></td> </tr> <tr> <td>0.01µ Element</td> <td><b>C</b></td> </tr> <tr> <td>0.01µ Element with dpi</td> <td><b>D</b></td> </tr> <tr> <td>1µ Element</td> <td><b>9</b></td> </tr> <tr> <td>1µ Element with dpi</td> <td><b>Q</b></td> </tr> <tr> <td>Adsorber</td> <td><b>A</b></td> </tr> </table> <table border="1"> <tr> <th colspan="2">Drain type</th> </tr> <tr> <td>Auto drain</td> <td><b>A</b></td> </tr> <tr> <td>Manual drain</td> <td><b>M</b></td> </tr> </table>	Element		5µ Element	<b>E</b>	0.01µ Element	<b>C</b>	0.01µ Element with dpi	<b>D</b>	1µ Element	<b>9</b>	1µ Element with dpi	<b>Q</b>	Adsorber	<b>A</b>	Drain type		Auto drain	<b>A</b>	Manual drain	<b>M</b>	<table border="1"> <tr> <th colspan="2">Relief / Adjustment</th> </tr> <tr> <td>Non-rising knob relieving</td> <td><b>N</b></td> </tr> </table> <table border="1"> <tr> <th colspan="2">Adjustment range</th> </tr> <tr> <td><b>With round gauge</b></td> <td></td> </tr> <tr> <td>2 bar; 30 psig; 0.2 MPa</td> <td><b>Z</b></td> </tr> <tr> <td>4 bar; 60 psig; 0.4 MPa</td> <td><b>M</b></td> </tr> <tr> <td>8 bar; 125 psig; 0.8 MPa</td> <td><b>G</b></td> </tr> <tr> <td>17 bar; 250 psig; 1.7 MPa</td> <td><b>J</b></td> </tr> <tr> <td><b>Without gauge</b></td> <td></td> </tr> <tr> <td>2 bar; 30 psig; 0.2 MPa</td> <td><b>Y</b></td> </tr> <tr> <td>4 bar; 60 psig; 0.4 MPa</td> <td><b>L</b></td> </tr> <tr> <td>8 bar; 125 psig; 0.8 MPa</td> <td><b>N</b></td> </tr> <tr> <td>17 bar; 250 psig; 1.7 MPa</td> <td><b>H</b></td> </tr> </table>	Relief / Adjustment		Non-rising knob relieving	<b>N</b>	Adjustment range		<b>With round gauge</b>		2 bar; 30 psig; 0.2 MPa	<b>Z</b>	4 bar; 60 psig; 0.4 MPa	<b>M</b>	8 bar; 125 psig; 0.8 MPa	<b>G</b>	17 bar; 250 psig; 1.7 MPa	<b>J</b>	<b>Without gauge</b>		2 bar; 30 psig; 0.2 MPa	<b>Y</b>	4 bar; 60 psig; 0.4 MPa	<b>L</b>	8 bar; 125 psig; 0.8 MPa	<b>N</b>	17 bar; 250 psig; 1.7 MPa	<b>H</b>	<table border="1"> <tr> <th colspan="2">Lub type</th> </tr> <tr> <td>Oil mist standard sight dome</td> <td><b>L</b></td> </tr> </table> <table border="1"> <tr> <th colspan="2">Drain type</th> </tr> <tr> <td>No drain; closed end</td> <td><b>N</b></td> </tr> </table>	Lub type		Oil mist standard sight dome	<b>L</b>	Drain type		No drain; closed end	<b>N</b>	<table border="1"> <tr> <th colspan="2">Mounting</th> </tr> <tr> <td>No bracket</td> <td><b>A</b></td> </tr> <tr> <td>Port blocks</td> <td><b>C</b></td> </tr> <tr> <td>Port blocks &amp; wall brkt</td> <td><b>D</b></td> </tr> <tr> <td>Wall bracket</td> <td><b>W</b></td> </tr> </table>	Mounting		No bracket	<b>A</b>	Port blocks	<b>C</b>	Port blocks & wall brkt	<b>D</b>	Wall bracket	<b>W</b>
	Combination			Thread type																																																																																																								
B/V + Combination	<b>Q</b>																																																																																																											
Combination + B/V	<b>X</b>																																																																																																											
Combination	<b>C</b>																																																																																																											
Shut off + Combination	<b>Y</b>																																																																																																											
Combination + Shut off	<b>Z</b>																																																																																																											
Combination type*		Port size																																																																																																										
F/R+L	<b>A</b>																																																																																																											
F+R+L	<b>B</b>																																																																																																											
F+Fc	<b>F</b>																																																																																																											
F+Fc+Fa	<b>G</b>																																																																																																											
F/R+Fc	<b>M</b>																																																																																																											
F+Fc1+Fc	<b>Q</b>																																																																																																											
F/R+Fc+Fa	<b>T</b>																																																																																																											
F+Fc+Fa	<b>G</b>																																																																																																											
Bowl type																																																																																																												
Poly bowl with bowl guard	<b>G</b>																																																																																																											
Metal bowl without sight gauge	<b>M</b>																																																																																																											
Metal bowl with sight gauge	<b>S</b>																																																																																																											
Element																																																																																																												
5µ Element	<b>E</b>																																																																																																											
0.01µ Element	<b>C</b>																																																																																																											
0.01µ Element with dpi	<b>D</b>																																																																																																											
1µ Element	<b>9</b>																																																																																																											
1µ Element with dpi	<b>Q</b>																																																																																																											
Adsorber	<b>A</b>																																																																																																											
Drain type																																																																																																												
Auto drain	<b>A</b>																																																																																																											
Manual drain	<b>M</b>																																																																																																											
Relief / Adjustment																																																																																																												
Non-rising knob relieving	<b>N</b>																																																																																																											
Adjustment range																																																																																																												
<b>With round gauge</b>																																																																																																												
2 bar; 30 psig; 0.2 MPa	<b>Z</b>																																																																																																											
4 bar; 60 psig; 0.4 MPa	<b>M</b>																																																																																																											
8 bar; 125 psig; 0.8 MPa	<b>G</b>																																																																																																											
17 bar; 250 psig; 1.7 MPa	<b>J</b>																																																																																																											
<b>Without gauge</b>																																																																																																												
2 bar; 30 psig; 0.2 MPa	<b>Y</b>																																																																																																											
4 bar; 60 psig; 0.4 MPa	<b>L</b>																																																																																																											
8 bar; 125 psig; 0.8 MPa	<b>N</b>																																																																																																											
17 bar; 250 psig; 1.7 MPa	<b>H</b>																																																																																																											
Lub type																																																																																																												
Oil mist standard sight dome	<b>L</b>																																																																																																											
Drain type																																																																																																												
No drain; closed end	<b>N</b>																																																																																																											
Mounting																																																																																																												
No bracket	<b>A</b>																																																																																																											
Port blocks	<b>C</b>																																																																																																											
Port blocks & wall brkt	<b>D</b>																																																																																																											
Wall bracket	<b>W</b>																																																																																																											