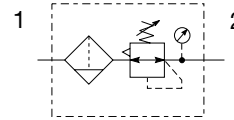


Global Air Preparation System

Compact Filter / Regulator - P32 Series



Symbols



- Integral 1/4", 3/8" or 1/2" ports (NPT, BSPP & BSPT)
- High efficiency 5 micron element as standard
- Excellent water removal efficiency
- Robust but lightweight aluminum construction
- Positive bayonet latch to ensure correct & safe fitting
- Secondary pressure ranges 0-2 bar (0-30 psig), 0-4 bar (0-60 psig), 0-8 bar (0-125 psig), 0-17 bar (0-250 psig)
- Secondary aspiration plus balanced poppet provides quick response and accurate pressure regulation

Options:

P32E	A	9	2	E	G	M	B	N	N	P	
Basic series Global modular mini filter / regulator P32E	Engr level Current A	Thread type BSPP 1 BSPT 2 NPT 9	Element 5µ Element E	Port size 1/4 2 3/8 3 1/2 4	Relief B Relieving N Non-relieving	Drain type M Manual drain A Auto drain	Mounting P Plastic panel mount nut				
				Bowl type Poly bowl with bowl guard G Metal bowl without sight gauge M Metal bowl with sight gauge S	Adjustment range						
						With square gauge	With round gauge				
						psig	bar	Z	2 bar; 30 psig; 0.2 MPa		
						1 = 30*	V = 2*	M	4 bar; 60 psig; 0.4 MPa		
						3 = 60	S = 4	G	8 bar; 125 psig; 0.8 MPa		
						5 = 125	T = 8	J [§]	17 bar; 250 psig; 1.7 MPa		
						Without gauge					
						Y 2 bar; 30 psig; 0.2 MPa					
						L 4 bar; 60 psig; 0.4 MPa					
						N 8 bar; 125 psig; 0.8 MPa					
						H [§] 17 bar; 250 psig; 1.7 MPa					

Bold items are most common.

* Unit comes with 0-4 bar or 0-60 psig gauge respectively.
§ Not available with poly bowl with bowl guard.

Port size	Description	Order code†	Flow‡ dm ³ /s (scfm)	Max. bar (psig)	Height mm (inches)	Width mm (inches)	Depth mm (inches)
1/4"	8 bar (125 psig) relieving - poly bowl - manual drain	P32EA92EGMBNGP	42 (89)	10 (150)	254 (10.0)	60 (2.36)	60 (2.36)
1/4"	8 bar (125 psig) relieving - poly bowl - auto drain	P32EA92EGABNGP	42 (89)	10 (150)	248 (9.76)	60 (2.36)	60 (2.36)
1/4"	8 bar (125 psig) relieving - metal bowl - manual drain	P32EA92ESMBNGP	42 (89)	17 (250)	245 (9.66)	60 (2.36)	60 (2.36)
1/4"	8 bar (125 psig) relieving - metal bowl - auto drain	P32EA92ESABNGP	42 (89)	17 (250)	254 (10.0)	60 (2.36)	95 (3.74)
3/8"	8 bar (125 psig) relieving - poly bowl - manual drain	P32EA93EGMBNGP	58 (123)	10 (150)	254 (10.0)	60 (2.36)	60 (2.36)
3/8"	8 bar (125 psig) relieving - poly bowl - auto drain	P32EA93EGABNGP	58 (123)	10 (150)	248 (9.76)	60 (2.36)	60 (2.36)
3/8"	8 bar (125 psig) relieving - metal bowl - manual drain	P32EA93ESMBNGP	58 (123)	17 (250)	245 (9.66)	60 (2.36)	60 (2.36)
3/8"	8 bar (125 psig) relieving - metal bowl - auto drain	P32EA93ESABNGP	58 (123)	17 (250)	254 (10.0)	60 (2.36)	95 (3.74)
1/2"	8 bar (125 psig) relieving - poly bowl - manual drain	P32EA94EGMBNGP	64 (136)	10 (150)	245 (9.66)	60 (2.36)	95 (3.74)
1/2"	8 bar (125 psig) relieving - poly bowl - auto drain	P32EA94EGABNGP	64 (136)	10 (150)	248 (9.76)	60 (2.36)	95 (3.74)
1/2"	8 bar (125 psig) relieving - metal bowl - manual drain	P32EA94ESMBNGP	64 (136)	17 (250)	245 (9.66)	60 (2.36)	60 (2.36)
1/2"	8 bar (125 psig) relieving - metal bowl - auto drain	P32EA94ESABNGP	64 (136)	17 (250)	254 (10.0)	60 (2.36)	60 (2.36)

† Standard part numbers shown in bold. For other models refer to Options chart above.

‡ Flow with 10 bar (145 psig) inlet pressure, 6.3 bar (91.3 psig) set pressure and 1 bar (14.5 psig) pressure drop.



Global Air Preparation System

Specifications

Flow capacity*	1/4	42 dm ³ /s (89 scfm)
	3/8	58 dm ³ /s (123 scfm)
	1/2	64 dm ³ /s (136 scfm)
Operating temperature	Plastic bowl	-25°C to 52°C (-13°F to 125°F)
	Metal bowl	-25°C to 65.5°C (-13°F to 150°F)
Max. supply pressure	Plastic bowl	10 bar (150 psig)
	Metal bowl	17 bar (250 psig)
Standard filtration		5 micron
Useful retention†		51 cm ³ (1.7 US oz.)
Adjusting range pressure		0-2 bar (30 psig)
		0-4 bar (60 psig)
		0-8 bar (125 psig)
		0-17 bar (250 psig)

Port size	BSPP / BSPT / NPT	1/4, 3/8, 1/2
Gauge port (2 ea.)	BSPP / BSPT / NPT	1/4
Weight		0.53 kg (1.17 lbs)

* Inlet pressure 10 bar (145 psig). Secondary pressure 6.3 bar (91.3 psig).
 † Useful retention refers to volume below the quiet zone baffle.

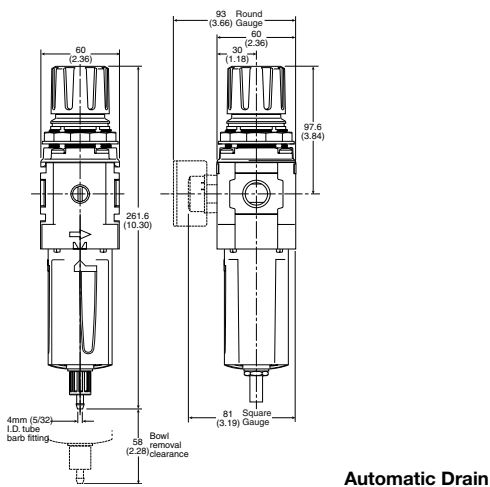
Air quality:

Within ISO 8573-1: 1991 Class 3 (Particulates)
 Within ISO 8573-1: 2001 Class 6 (Particulates)

Material Specifications

Body		Aluminum
Adjustment knob		Acetal
Body cap		ABS
Element retainer / Baffle		Acetal
Bowl	Plastic bowl	Polycarbonate
	Metal bowl	Zinc
Bowl guard		Nylon
Filter element		Sintered polyethylene
Seals		Nitrile
Springs	Main regulating / valve	Steel / S.S.
Valve assembly		Brass / Nitrile
Diaphragm assembly		Nitrile / Zinc
Panel nut		Acetal
Sight gauge	Metal bowl	Polycarbonate

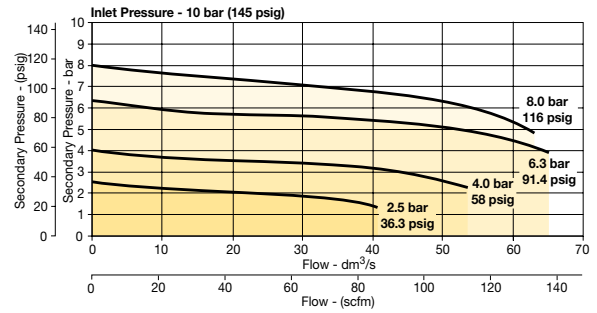
Dimensions mm (inches)



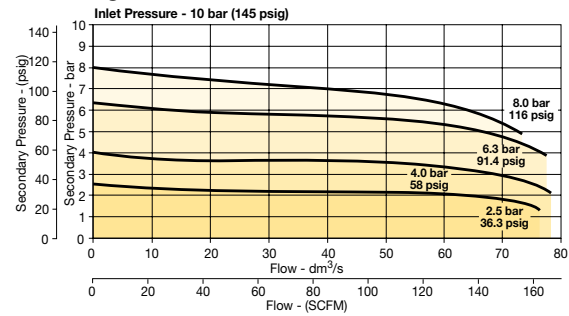
WARNING
 Product rupture can cause serious injury.
 Do not connect regulator to bottled gas.
 Do not exceed Maximum primary pressure rating.

Flow Charts

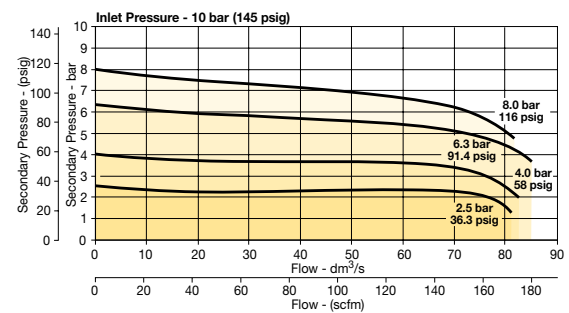
1/4 Filter / Regulator



3/8 Filter/Regulator



1/2 Filter/Regulator



Repair and Service Kits

Plastic bowl / Bowl guard manual drain	P32KA00BGM
Metal bowl / Sight gauge manual drain	P32KA00BSM
Auto drain	P32KA00DA
5µ particle filter element	P32KA00ESE
Regulator repair kit - relieving	P32KA00RB
Regulator repair kit - non-relieving	P32KA00RC
Panel mount nut - aluminum	P32KA00MM
Panel mount nut - plastic	P32KA00MP
Angle bracket (fits to panel mount threads)	P32KA00MR
T-bracket (fits to body connector)	P32KA00MB
T-bracket with body connector	P32KA00MT
Body connector	P32KA00CB

Gauges

50mm (2") Round 1/4" center back mount

0-30 psig / 0-2 bar	K4520N14030
0-60 psig / 0-4 bar	K4520N14060
0-160 psig / 0-11 bar	K4520N14160
0-300 psig / 0-20 bar	K4520N14300

For best performance, regulated pressure should always be set by increasing the pressure up to the desired setting.

