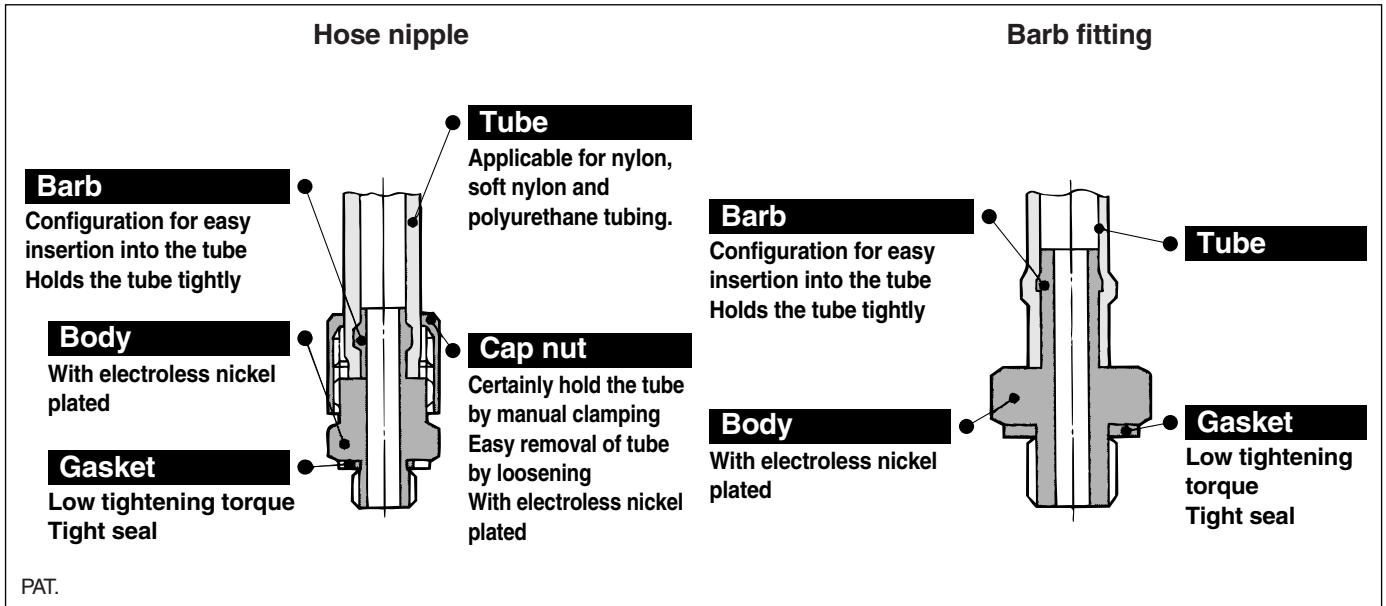


Miniature Fittings

M3, M5, R 1/8

Series M



Compact piping space

Hose nipple tubing connection/disconnection is simple while keeping a large retaining force.

Line up various styles

For air connection in confined areas.

Accepts many styles of plastic tubing

Hose nipple and hose elbow accepts nylon, soft nylon, and polyurethane tubing.



Specifications

Applicable tubing material		Nylon	Soft nylon	Polyurethane
Applicable tubing	M3	—	—	—
	M5-R 1/8	ø4/ø2.5 ø6/ø4	ø3.18/ø2.18	ø4/ø2.5 ø6/ø4
Max. operating pressure (at 20°C)		1.5 MPa	1.0 MPa	0.8 MPa
Connection size		M3, M5, R 1/8		
Thread		JIS B 0209 Class 2 (Metric coarse thread), JIS B 0203 (Taper pipe thread)		

Principal Parts Material

Material	Body	C3604BD (Nipple M-3N, M-5N: Stainless steel 303)
	Gasket	PVC, Nylon 66: GF30%, Stainless steel 304, NBR

Fitting Markings for Applicable Tubing Material (Barb fitting, Barb elbow, Barb elbow (H))

Tubing material determines the compatible fittings. (Refer to the table below.)

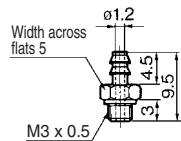
Connection	Tubing	Fitting marking for applicable tubing material			Surface treatment (Color)
		Barb fittings	Barb elbow	Barb elbow (H)	
M3	Soft nylon tubing Polyurethane tubing		—		Electroless nickel plated (Silver color)
	Nylon tubing				Electroless nickel plated (Silver color)
R 1/8, M5	Soft nylon tubing Polyurethane tubing	Marking	Marking	Marking	Electroless nickel plated (Black color) [Except stud]
	Nylon tubing				Electroless nickel plated (Silver color)

* Body of M-5E, M-5ER, M-5M is not surface-treated.
Electroless nickel plate treated is available as option -X2.

Series M

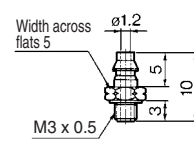
Series M3

Barb Fitting for Soft Tubing: M-3AU-3



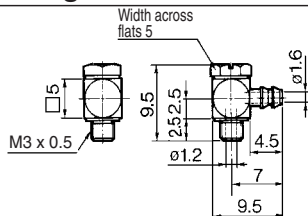
Effective area: 0.9 mm² Weight: 0.6 g

Barb Fitting for Soft Tubing: M-3AU-4



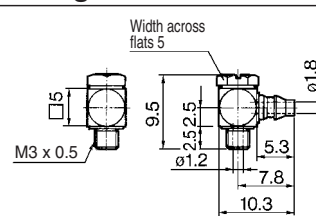
Effective area: 0.9 mm² Weight: 0.7 g

Barb Elbow for Soft Tubing: M-3ALU-3



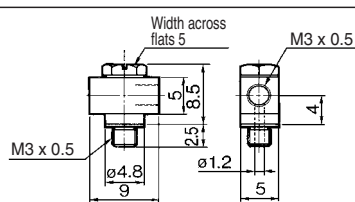
Effective area: 0.6 mm² Weight: 0.8 g

Barb Elbow for Soft Tubing: M-3ALU-4



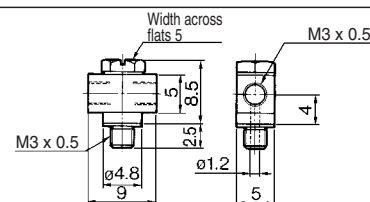
Effective area: 0.6 mm² Weight: 0.9 g

Universal Elbow: M-3UL



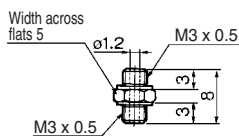
Effective area: 0.6 mm² Weight: 1.6 g

Universal Tee: M-3UT



Effective area: 0.6 mm² Weight: 1.4 g

Nipple: M-3N



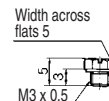
Weight: 0.6 g
Effective area: 0.9 mm²

Gasket: M-3G



Weight: 0.005 g

Plug: M-3P



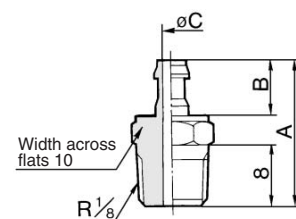
Weight: 0.5 g

Series R 1/8

Barb Fitting for Nylon Tubing, Soft Tubing: M-01A□-4/-6



Applicable tubing	Model	A	B	øC	Effective area (mm ²)	Weight (g)
Nylon tubing	M-01AN-4	16	5	1.8	2.1	6.4
	M-01AN-6	18	7	2.5	4.0	6.6
Soft tubing	M-01AU-4	16	5	1.8	2.1	6.5
	M-01AU-6	18	7	2.5	4.0	6.7



Hose Nipple: M-01H-4/-6



Model	A	B	øC	øD	E	Effective area (mm ²)	Weight (g)
M-01H-4	19.5	8.5	1.8	6.5	7	2.1	7.1
M-01H-6	20.5	9.5	3	8.5	8	5.5	7.7

